

## Database Working Group

Ginny Listman, Director of Engineering

Mailing list: [dbwg@arin.net](mailto:dbwg@arin.net)

Mail archives:

[http://www.arin.net/mailing\\_lists/dbwg/index.html](http://www.arin.net/mailing_lists/dbwg/index.html)

# Agenda

- Post Conversion Report
- WHOIS Output
- Stale POC Data
- Lame Delegations in IN-ADDR.ARPA (2002-1)
- Bulk Copies of ARIN WHOIS (2002-4)
- Next Steps for ARIN DB
- Early Registration Transfer Project (ERX)

# Post Conversion Report

Ginny Listman  
Director of Engineering

## New Features Statistics

As of October 24, 2002:

- 6,346 of 335,659 Orgs have POCs (1.9%)
- 389,047 of 819,984 nets are reassign-simple (47%)
- 6,007 Organization Networks without POCs
- 451 AS Numbers without POCs
- 1,556 records with Abuse POC
- 514 records with NOC POC



## Rejected Notices

- How should ARIN mark unsuccessful templates?
- Some suggestions:
  - Append “REJECTED” to the subject line
  - Embed a one line statement at the beginning of the mail message

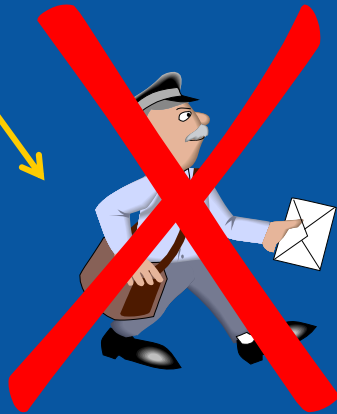


# MAIL-FROM Authentication



Authenticate SENDER if it exists

If no SENDER authenticate first FROM



FROM



REPLY\_TO

If no FROM authenticate first REPLY\_TO



# Who Gets the Notification?



REPLY\_TO



SENDER



FROM

Response sent to:



# Who Gets the Notification?

```
if (REPLY_TO exists) {  
    to REPLY_TO  
    if (SENDER exists) {  
        cc to SENDER  
    }  
    elseif (FROM exists) {  
        cc to FROM  
    }  
}  
elseif (SENDER exists) {  
    to SENDER  
}  
elseif (FROM exists) {  
    To FROM  
}
```



# WHOIS Output

Ginny Listman  
Director of Engineering

## Regarding WHOIS Format

What procedures should be in place to make recommendations and implement changes in the WHOIS format?

## Specific Suggestions

Are there any recommended changes that need to be discussed?

# Stale POC Data

Ginny Listman  
Director of Engineering  
ARIN

## Problem Definition

- Data in Whois used to troubleshoot network problems, however, some of the information becomes stale
- ARIN does limited verification of the data at registration
- ARIN does not perform periodic checks for stale information
- ARIN relies on the customer to provide accurate updated information in a timely manner

## What's in WHOIS?

| Registration Type                | Number of Records | Percentage of Database |
|----------------------------------|-------------------|------------------------|
| Direct Allocation                | 6,344             | 0.77%                  |
| Direct Assignment                | 34,543            | 4.22%                  |
| Reallocations                    | 14,532            | 1.77%                  |
| Detailed Reassign w/<br>in-addr  | 388,644           | 47.43%                 |
| Detailed Reassign<br>w/o in-addr | 12,125            | 1.48%                  |
| Simple<br>Reassignments          | 363,166           | 44.32%                 |

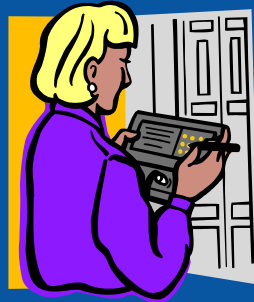
As of 10/23/02

# Current Procedure

Registration Services  
Help Desk receives  
notification from  
the community and log  
information for processing



Contact listed  
POC by  
sending test  
message



Contact listed  
upstream  
POC via email  
and/or phone

The information for this record  
has been reported to be invalid.  
ARIN has attempted to obtain  
updated data, but has been  
unsuccessful.

Add WHOIS comment on  
POC and resource records

## What You Should Know

- As of October 24:
  - 67 POC marked stale
  - 3 Orgs with stale POC data
  - 584 Networks with stale POC data
  - 12 AS Numbers with stale POC data
- 3 POCs have been corrected
- To update information, submit template:
  - Provide valid POC information
  - Public Comments: NONE